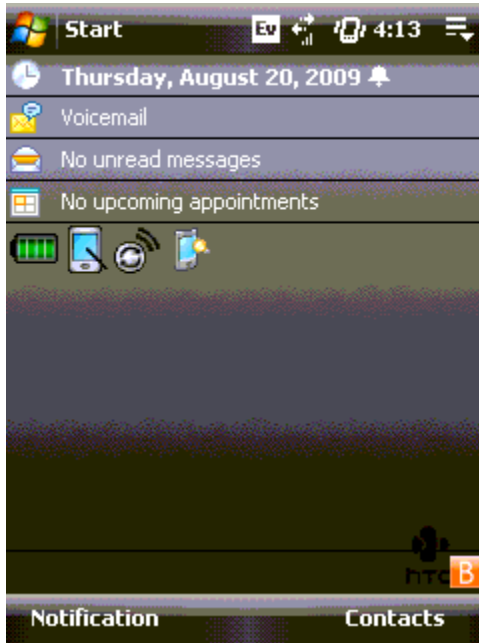


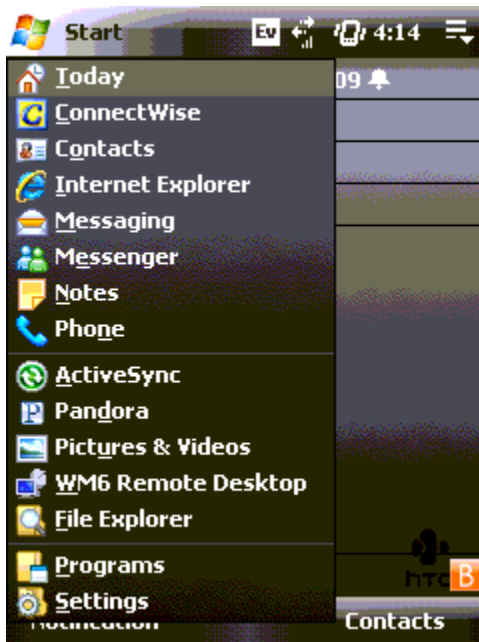


## Configure a Windows Mobile Device with Exchange

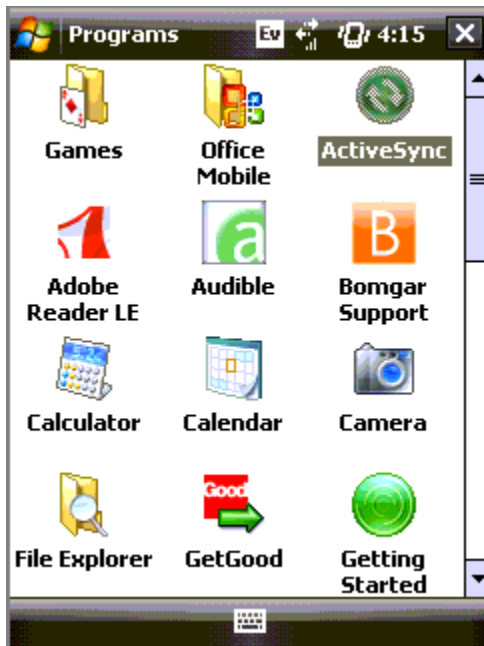
1.) Start at the home screen



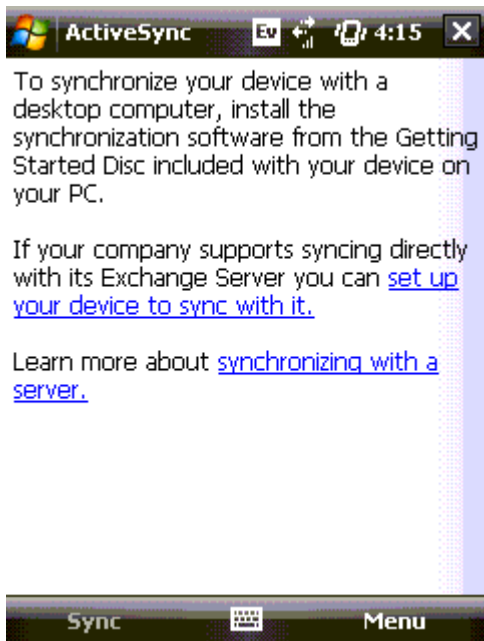
2.) Press the START menu at the top left and select the Programs icon at the bottom



### 3.) Select ActiveSync



4.) The first screen will give you this message below. Select the link to set up your device to sync with an exchange server.



- 5.) Input your email address in the field and leave the check mark to detect Exchange Server Settings automatically. This feature will set up your phone for you, if it doesn't, review step in order to obtain the server address.

ActiveSync 4:17

Enter Email Address

Email address:  
helpdesk@inetinc.net  
(Example: help@microsoft.com)

Attempt to detect Exchange Server Settings automatically

Cancel Next

- 6.) Input your username and password you use to access your email. The domain is INET. Leave the Save Password option checked.

ActiveSync 4:18

User Information

User name: helpdesk

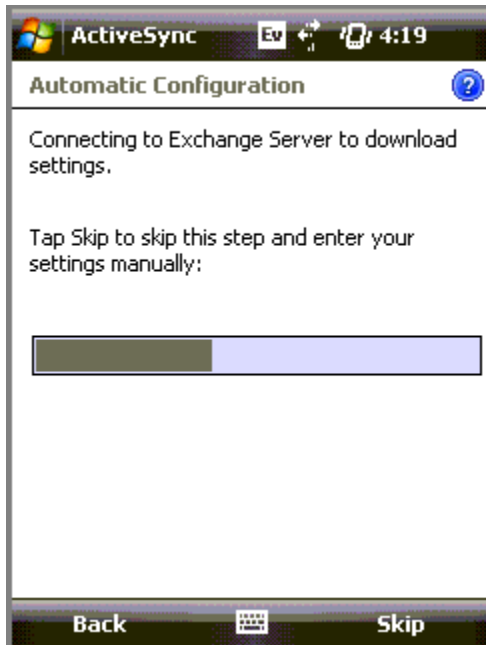
Password: \*\*\*\*\*

Domain: INET

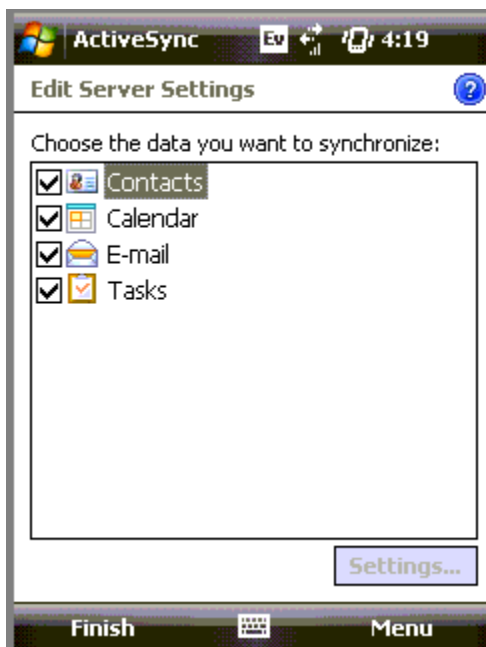
Save password (required for automatic sync)

Back Next

7.) If everything works, you will see the exchange server downloading your settings.



8.) This next screen will ask what you want to sync with your exchange profile. Leave everything checked. When you add something to your phone, it will sync that with your computer and vice versa from your computer to your phone!





9.) If the server does not connect automatically, input the server address as mobile.inetinc.net. and leave the SSL box checked.



10.) Press ok when the following message pops up for you to enforce security policies on your phone.



- 11.) You are all done once you see the exchange server downloading. The first initial download will be long as it needs to download everything from the server. Once the first initial download is complete, the sync times will reduce tremendously.

